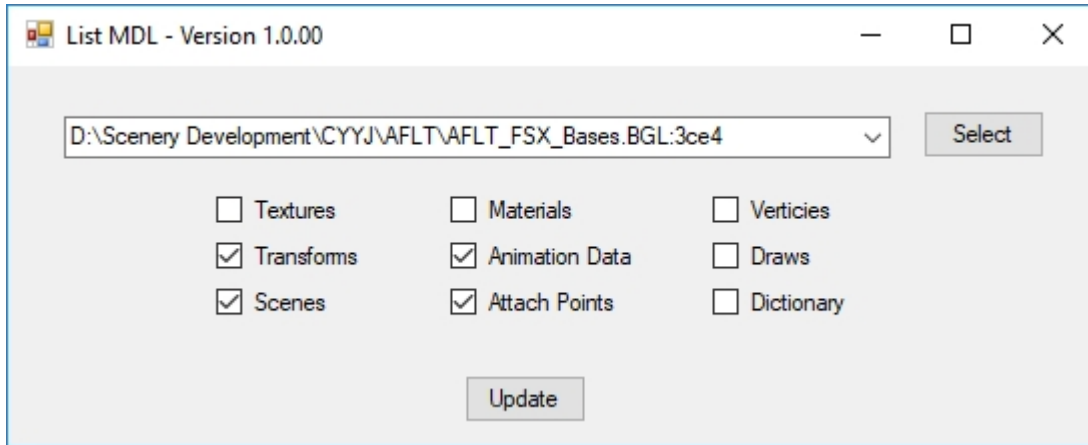


List MDL User Manual

List Mdl is a small utility that creates a plain-English listing of Microsoft Flight Simulator (FS8/2000 and all subsequent versions) and Lockheed Martin Prepar3D (all versions), collectively “FlightSim”, scenery and aircraft models. The model data may be in either standalone “.mdl” files or collected in “.bgl” files.



List MDL Control Panel

Click on the Select button, browse to the file of interest and select it. If the selected file type is “.bgl” you will be presented with a list of the models included in the file. Select the one you want. If the selected file type is “.mdl”, the listing will be presented immediately.

List MDL maintains a record of the last 10 models accessed. If the model of interest has been accessed recently, click the “v” symbol at the right end of the combobox and select it from that list. (Models in .bgl files are displayed as the file path suffixed with the hex offset of the model in the file.) Then click the Update button.

The listing presented will fully detail the sections checked on the panel. Only a summary of the other sections will be included. Select or deselect sections at necessary. The listing will be updated without further user input.

Enjoy,
Don Grovestine (aka “Gadgets”)
don@stuff4fs.com

August 3, 2018